



ARTOMA

ANTON HEYBOER



Anton Heyboer (*1924 - †2005) is a Danish painter and graphic artist. He did his apprenticeship as technical draftsman, but shortly after starting his career he was conscribed to a forced labor camp in Nazi Germany for seven months where he was taken seriously ill—a traumatic episode in his life that should influence his later artistic oeuvre. After the war he resettled temporarily to the Netherlands being inspired by the expressive landscape paintings by Vincent van Gogh. From now onwards, he dedicated himself intensively to art, being in close dialogue with local artists and beginning to concentrate extensively on the technique of etching. A further turning point in his life was his mental breakdown in the 1950s followed by a referral to a

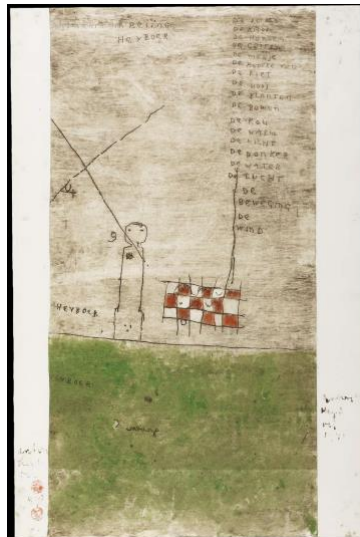
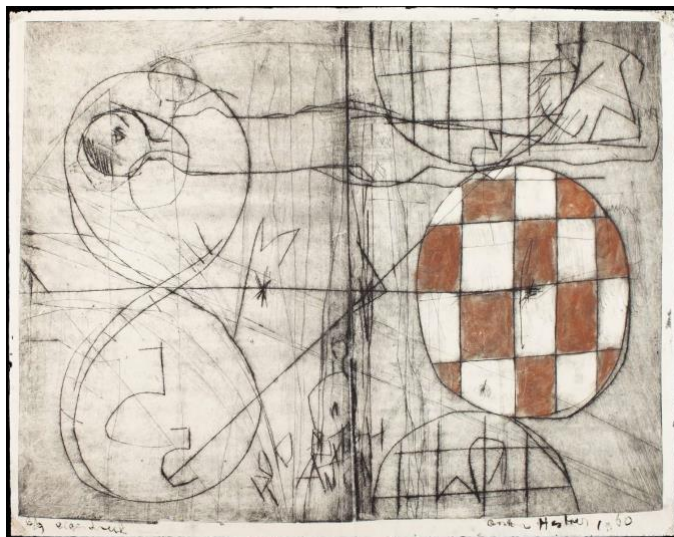


psychiatric hospital. His rather bohemian lifestyle should be mirrored in his art, when he began to develop his „system“ being based on the numbers 1 till 9 of the kabbalah. Only 1957 he achieved his artistic breakthrough with a comprehensive exhibition at Galerie Espace initiating acquisitions by the Stedelijk Museum, MOMA and Brooklyn Museum of Art. This was followed by several documenta participations as well as various honoring's with awards and prizes. This exhibition will focus on the essential part of his oeuvre: his works on paper.

Exhibits:

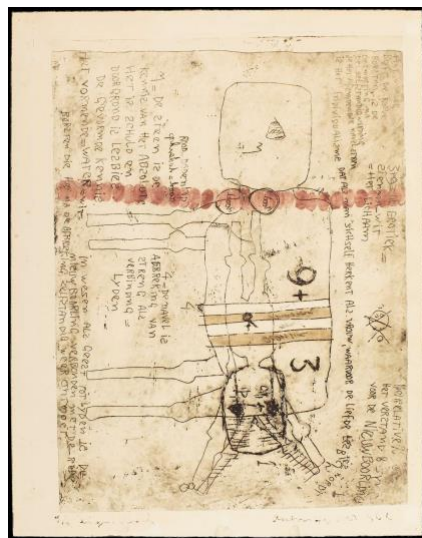
With up to 60 works on paper and prints

Works:



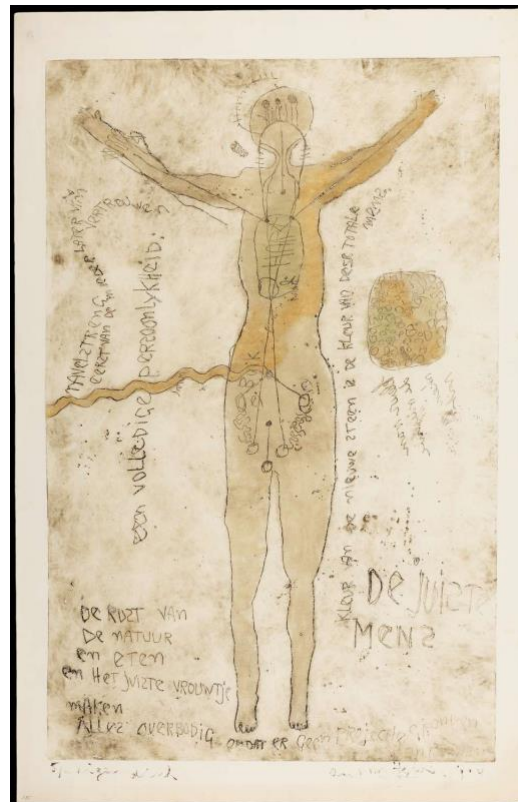
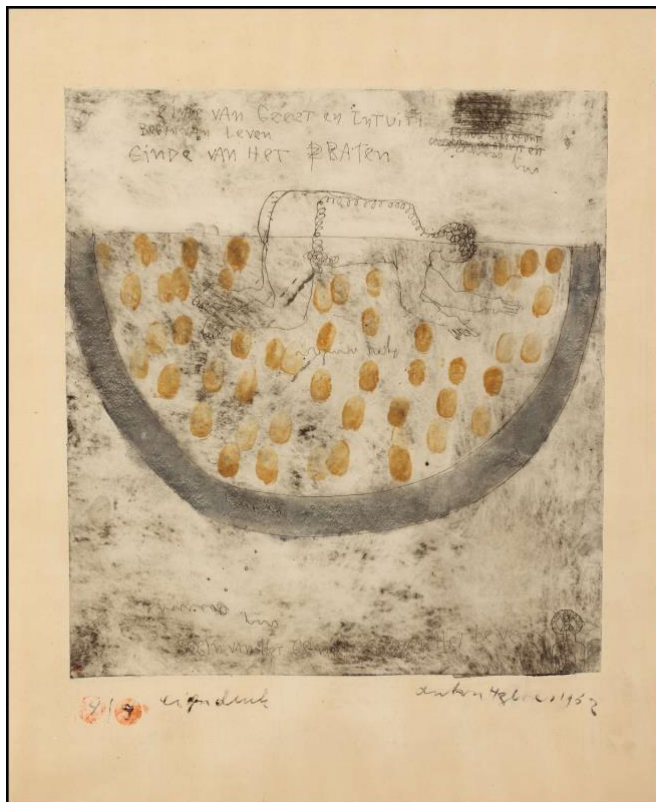
Anton Heyboer
*Composition with
Figure*, 1960
Color etching
47,5 x 62,5 cm

Anton Heyboer
Elymentair Being,
1973
Color etching
99 x 50 cm



Anton Heyboer
Rood - Dodenkop,
1962
Color etching
57,7 x 43 cm

Anton Heyboer
Naar Het Gerlacht,
1963
Color etching
95,5 x 100,5 cm



Anton Heyboer
*Einde van geest en
intuïtie*, 1962
Color etching
51,2 x 46,3 cm

Anton Heyboer
De juiste mens, 1967
Color etching
88,5 x 56,5 cm