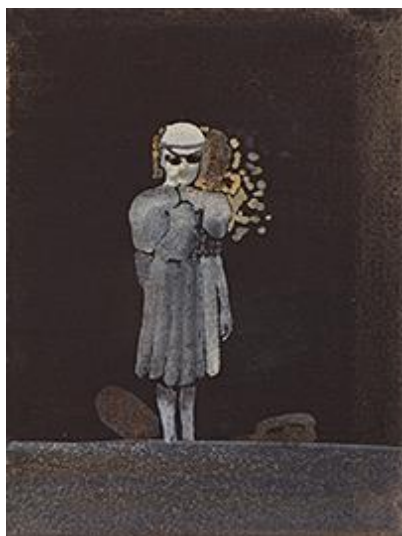




ARTOMA

FRIEDRICH EINHOFF



Friedrich Einhoff's (1936 – 2018) works on canvas, cardboard and paper captivate with their delicate multilayered surface processing with acrylic, charcoal and earth admixed giving the impression of being tactile membranes, which develop a corporeal quality through earthy beige and gray tones and a terrestrial effect of depth through green and black tones. His oeuvre deals with the image of the human being as an ambivalent and fragile entity. His personages seem to be guests of life by chance, not being able to escape the agony of existence. Traces of anonymous figures, torn body fragments, and facial outlines are pushing from material densification towards their own dissolution narrating of a notion of man that has been subjected to constant transformation through material, sensory, and emotional processes. In the alienation, displace-

ment, and inner turmoil, the figures search in isolated juxtaposition for their inviolable state of being. The mediated portentous forlornness is reminiscent of the existential pictorial worlds by Peter Breughel, Francisco de Goya or Francis Bacon, or the absurd scenarios by Franz Kafka or Samuel Beckett.

Exhibits:

Paintings and works on paper

Exhibition venues:

- 2020** Anhaltischer Kunstverein Dessau
- 2019** Felix-Nussbaum-Haus, Museumsquartier Osnabrück
- 2018** Westwendischer Kunstverein / Zehntspeicher, Gartow
- 2014** Griffelkunst, Hamburg, Germany
- 2009** Kunsthaus Hamburg, Barlach Halle K, Germany
- 2002** Freie Akademie der Künste, Hamburg, Germany
- 1997** Marburger Kunstverein, Germany

Works:



Friedrich Einhoff
Figur 08/10/11, 2011
Acrylic, charcoal and
soil on canvas
40 x 30 cm

Friedrich Einhoff
Figur im Wasser 2,
2008
Acrylic, charcoal and
soil on canvas
106 x 145 cm

Friedrich Einhoff
*Zwei vertraute Figuren
II*, 2008
Acrylic, charcoal and
soil on canvas
150 x 115 cm



Friedrich Einhoff
Phil Collins macht mit,
1986/87
Acrylic, charcoal and
soil on canvas
105 x 105 cm

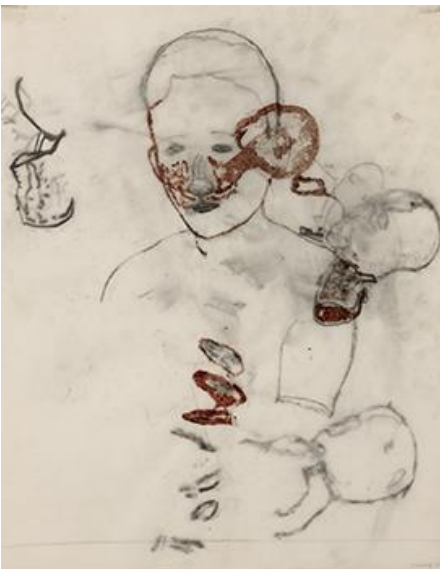
Friedrich Einhoff
Stürzende Figuren,
1990
Acrylic, charcoal and
soil on paper
35,6 x 24,7 cm



Friedrich Einhoff
Springer, 1998
Acrylic, charcoal and
soil on paper
31,5 x 24,2 cm



Friedrich Einhoff
Hand, 2011
Acrylic, charcoal and
soil on paper
16,5 x 24 cm



Friedrich Einhoff
Begleitete Figur, 1997
Acrylic, charcoal and
soil on paper
44 x 35 cm

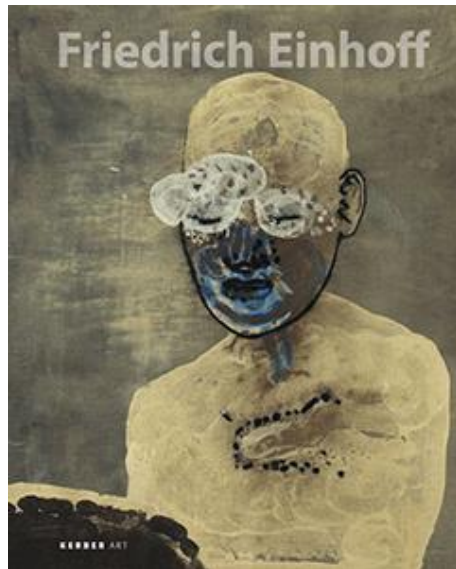


Friedrich Einhoff
Zwei Figuren vom Juli
2006, 2006
Acrylic, charcoal and
soil on canvas
150 x 115 cm



Friedrich Einhoff
Frau mit Faltenrock,
2011
Acrylic, charcoal and
soil on canvas
40 x 30 cm

Catalogue:



Friedrich Einhoff, 2009

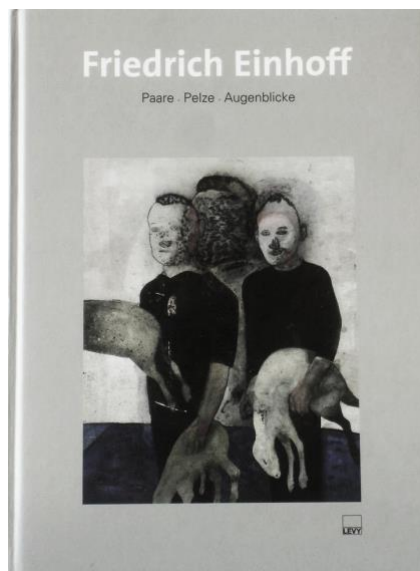
Edited by
Thomas Levy

Texts
Friedrich Einhoff, Belinda Grace Gardner, Werner Hofmann, Claus Mewes

Graphic design
Thomas Levy, Klaus-Peter Plehn

Kerber Publishers

ISBN: 978-3-86678-259-4
Format: 21,50 × 26,50 cm
Pages: 256
Cover: Hardcover, bound
Languages: German | English



Friedrich Einhoff – Paare Pelze Augenblicke, 2006

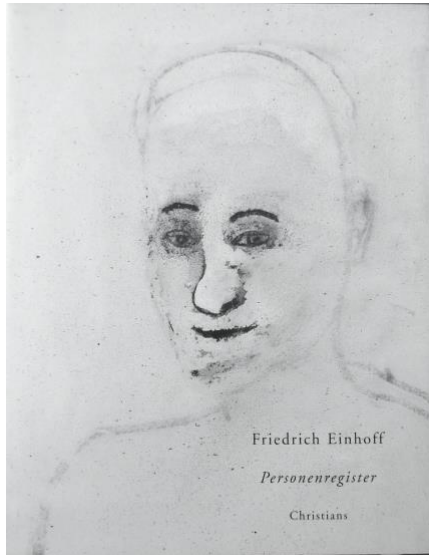
Edited by
Thomas Levy

Text
Belinda Grace Gardner

Graphic design
Korsager Grafisk Design, Denmark

Kerber Publishers

ISBN: 978-3-86678-259-4
Format: 21,50 × 26,50 cm
Pages: 64
Cover: Hardcover, bound
Languages: German | English



Friedrich Einhoff - Personenregister, Arbeiten von 1995 bis 2001

Edited by
Thomas Levy
Freie Akademie der Künste in Hamburg

Texts
Friedrich Einhoff, Helmut R. Leppien, Jacqueline Rugo

Christians Publishers

ISBN: 3-7672-1396-0

Format: 21,50 x 29 cm

Pages: 112

Cover: Hardcover, bound^[1]_[SEP]

Language: German

Exhibition views:



Friedrich Einhoff. Figuren als Stilleben,
Westwendischer Kunstverein / Zehntspeicher,
Gartow, 2018

